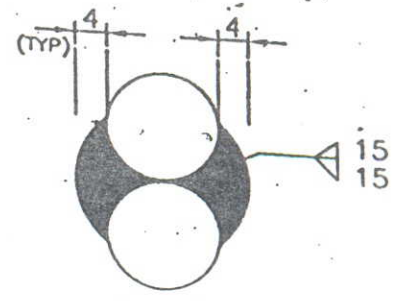
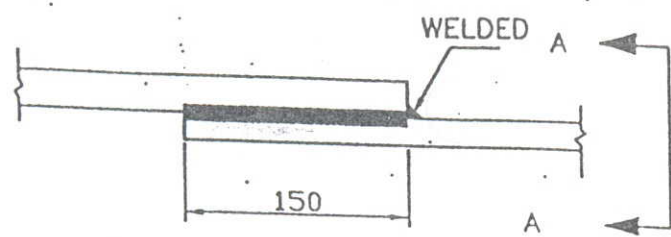


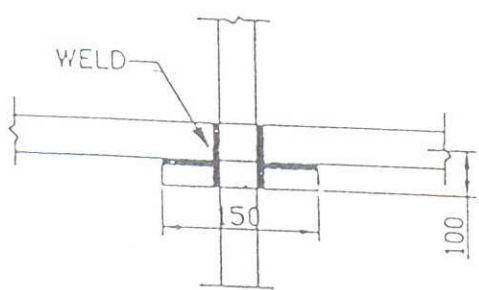
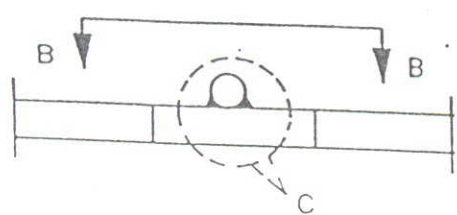
ROD TO ROD

1. STRAIGHT LAP JOINT/RISER

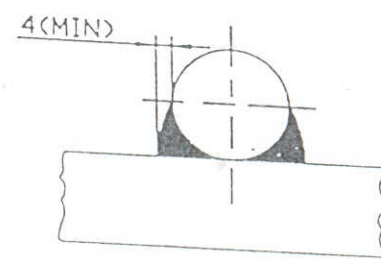


VIEW A-A

2. RIGHT ANGLED JOINT

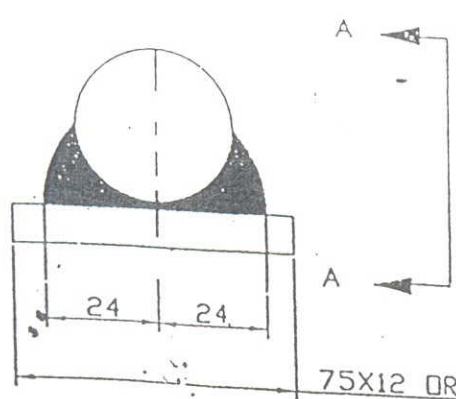


VIEW B-B

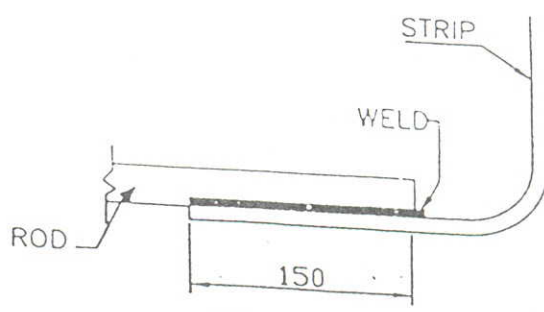


VIEW C

3. ROD TO STRIP



75X12 OR 50X6 GI FLAT



VIEW A-A



EQUIPMENT EARTHING DETAILS

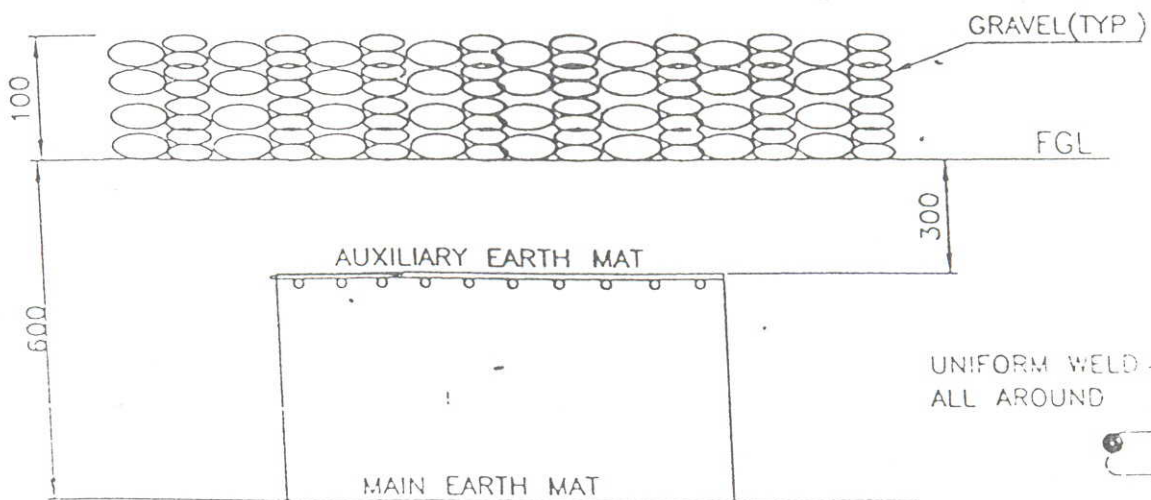
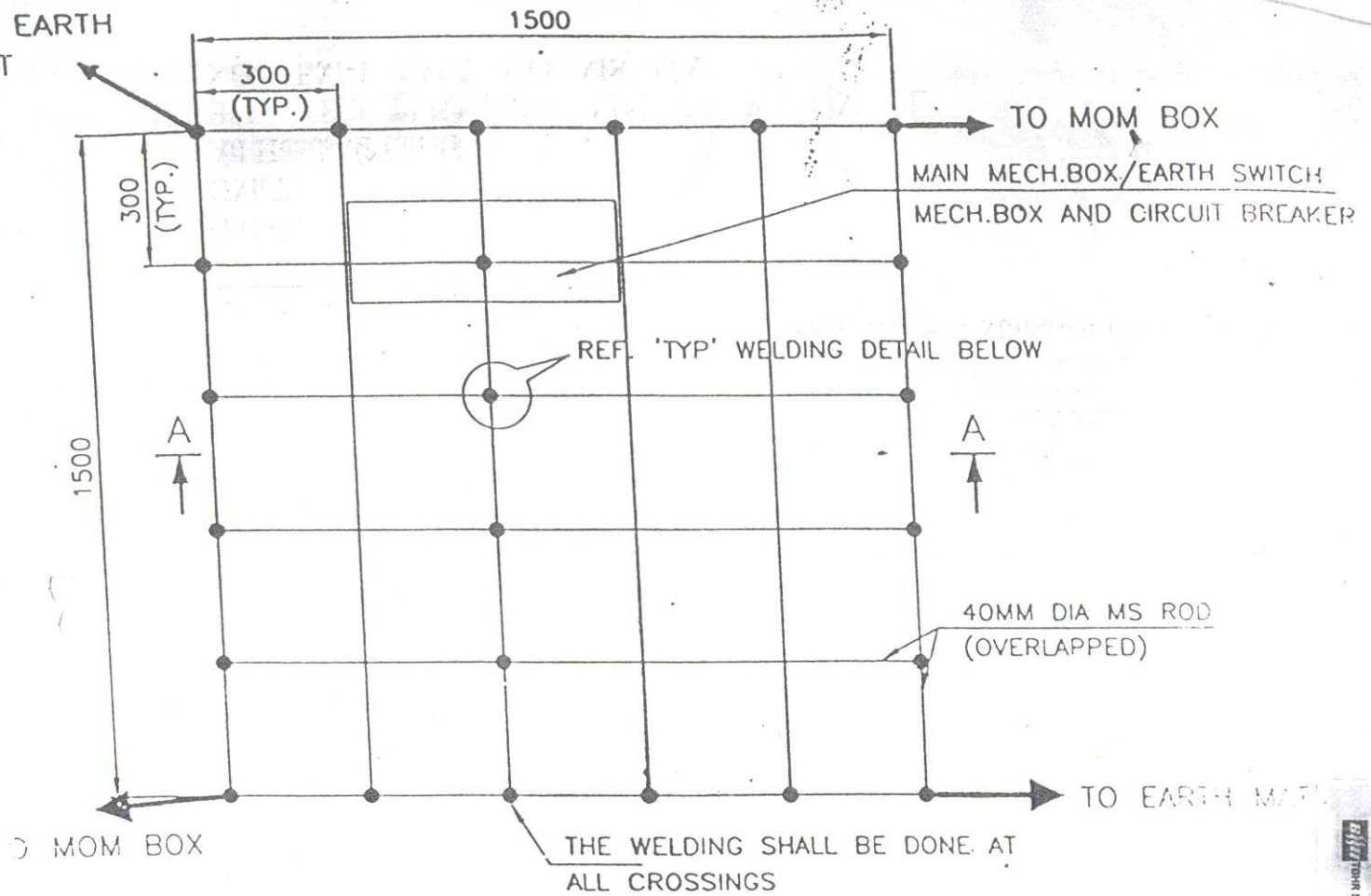
DRG No.

DRG No.

TB-STD-316-Rod Welding

REV. 00

SHEET No. 00



UNIFORM WELD
ALL AROUND



SECTION AA

NOTE:

AUX. EARTH MAT SHALL BE SO POSITIONED THAT THE FOOT OF THE OPERATOR ALWAYS LIE OVER THE AUX. EARTH MAT AREA WHILE ATTENDING / OPERATING THE MECH. BOX THE CABLE TRENCH ROUTING SHALL BE PLANNED ACCORDINGLY.



CCMPU. DRC. REF.

Report No

EQUIPMENT EARTHING DETAILS

AUXILIARY EARTH MAT FOR ISOLATOR MAIN MECH. E/S
MECH. BOX & CB (TYP.)

TB-STD-316-Auxiliary Mat.



SHEET No.